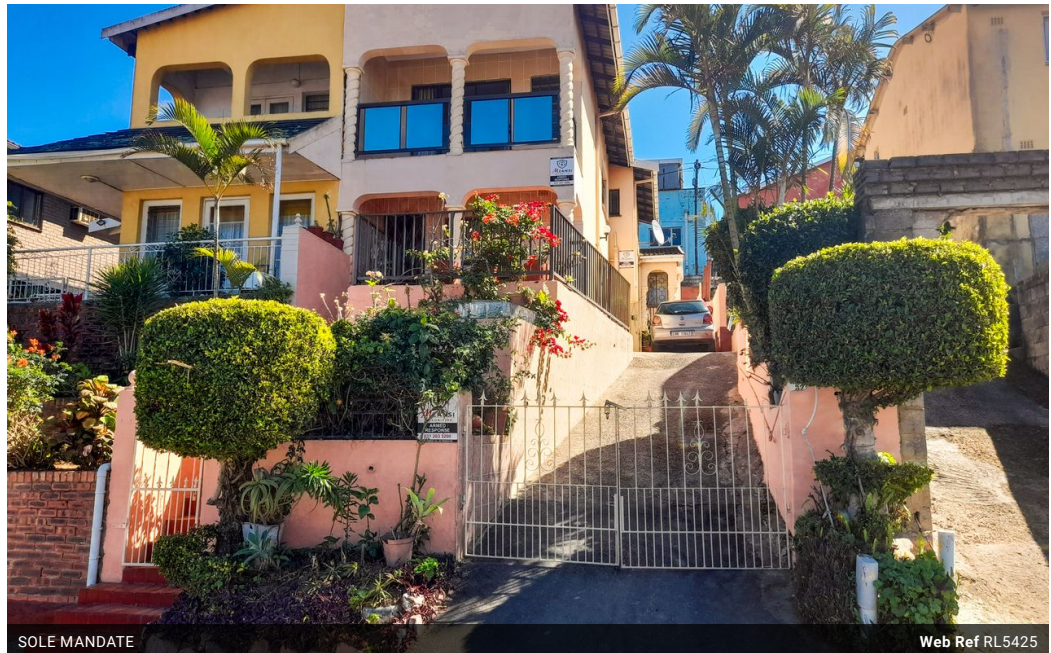




Bradley Pandaram
072 723 4794
bradley@ingwe.co.za

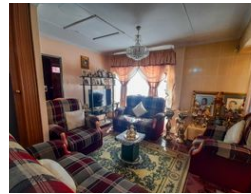
Contact Umhlanga
031 7019898

Ridge 6
20 Ncondo Place
Umhlanga Ridge
Umhlanga



SOLE MANDATE

Web Ref RL5425



R890,000

 3  3  1

Monthly Bond Repayment R9,186.48
Calculated over 20 years at 11% with no deposit.

Transfer Costs R28,244.00 **Bond Costs** R21,450.00

These calculations are only a guide. Please ask your conveyancer for exact calculations.

Monthly Rates R650

Big Family on a Low Budget? Two Homes In One!

It's not every day that you have so many options and opportunities to grow into a home to suit your unique needs. The home is proudly perched on a well-established road in Shallcross. It is connected to Queensburgh, Pinetown, and Chatsworth, making traveling convenient and seamless. It is three hundred meters from Shallcross Clinic, The Ridge Shopping Center, Engen Garage, and Malvern Primary School.

This extended double-story duplex has the flexibility and infrastructure to accommodate a large family or a tenant to subsidize your bond.

Drive-in access secures parking of 2 vehicles behind locked gates and walls all around the property. The main entrance is inviting and surrounded by a porch with a balcony overlooking a well-maintained, stepped-down garden area and clear uninterrupted views. This will lead you into one of two...

Features

Pets Allowed		Yes			
Interior		Exterior		Sizes	
Bedrooms	3	Garages	1	Land Size	202m ²
Bathrooms	3	Carports / Parkings	1		
Kitchens	2	Security	Yes		
Recep. Rooms	3	Pool	No		
Furnished	No	Views	True		