



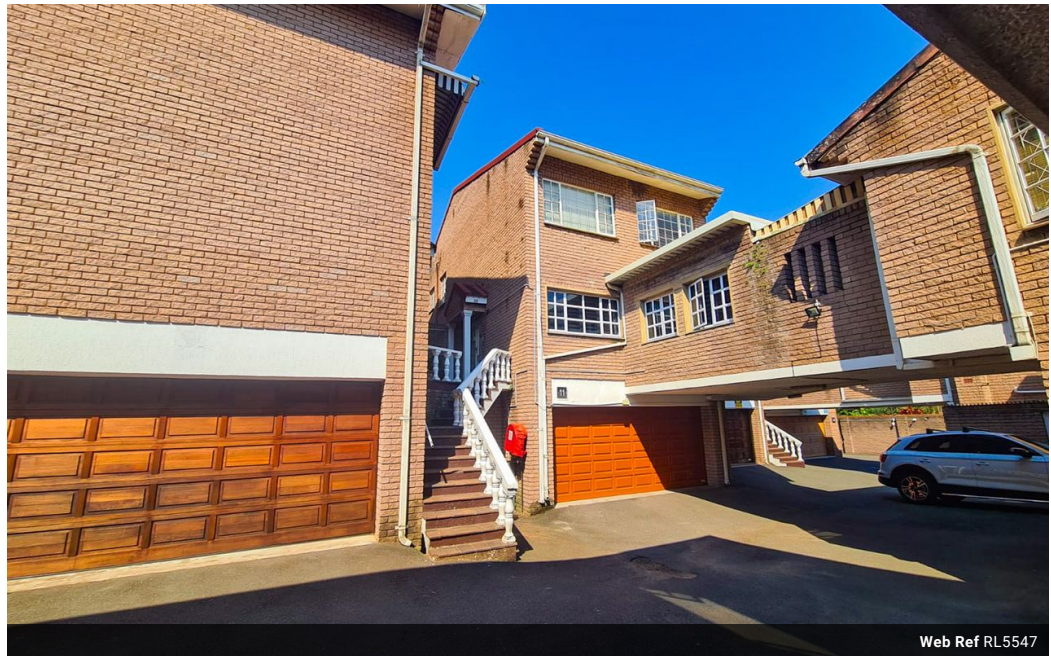
**Kemuel Marcus**  
067 045 0431  
kemuel@ingwe.co.za



**Noeleen Naidoo**  
082 828 2895  
noeleen@ingwe.co.za

Contact Umhlanga  
031 7019898

Ridge 6  
20 Ncondo Place  
Umhlanga Ridge  
Umhlanga



Web Ref RL5547



**R2,800,000**

 3  3  1

**Monthly Bond Repayment** R28,901.27

Calculated over 20 years at 11% with no deposit.

**Transfer Costs** R141,887.00 **Bond Costs** R40,300.00

These calculations are only a guide. Please ask your conveyancer for exact calculations.

**Monthly Levy** R2,400 **Monthly Rates** R1,500

### SOUGHT AFTER COMPLEX SO CLOSE TO EVERYTHING IN THE HEART OF MUSGRAVE

Welcome to this beautiful 3 bedroom,3.5 bathroom home,perfectly designed for comfortable living.

With its spacious rooms,ample natural lighting and stylish finishes

This property is a must-see.

Key features :

3 spacious bedrooms with built-in cupboards ample space .

Newly renovated modern bathrooms with elegant futures.

Open plan modern kitchen with built in freezer dishwasher and fridge all Siemens appliances  
Built in coffee station

Private pool and garden area perfect for outdoor entertaining.

Double garage

### Features

#### Interior

Bedrooms	3
Bathrooms	3
Kitchens	1
Recep. Rooms	2
Furnished	No

#### Exterior

Garages	1
Carports / Parkings	1
Security	Yes
Pool	Yes
Views	False

#### Sizes

Floor Size	239m <sup>2</sup>
Land Size	239m <sup>2</sup>