



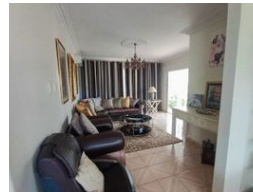
Samantha Reddy
0836619350
samantha@ingwe.co.za

Contact Umhlanga
031 7019898

Ridge 6
20 Ncondo Place
Umhlanga Ridge
Umhlanga



Web Ref RL5548



R2,650,000

 7  6  1

Monthly Bond Repayment R27,352.99
Calculated over 20 years at 11% with no deposit.

Transfer Costs R129,887.00 **Bond Costs** R40,300.00
These calculations are only a guide. Please ask your conveyancer for exact calculations.

Monthly Rates R1,836.8

Elegant & Modern Home with 2 beautiful Flatlets

This magnificent home is a dream come true Gem filled with exquisite and tasteful elegance, beautiful electronic gate opens into a tranquil well manicured garden, lead you to relaxing and stunning lounges, 1 leading through the scenic garden to the upstairs lounge and the other from the main entrance through beautiful glass door into a stunning hall way leading to the main lounge witch has a pull down screen for cinema style for a double up pleasure, the wooden high gloss stairs leads up to the second storey.

The elegant lounge leads to a spacious beautiful flowing open plan corner bar and dining room which leads to a modern kitchen fully fitted with caesar stone tops with classy finishes and island glass top stove with extractor, a step down leads you to a fully fitted scullery with a gas stove on your right and to the...

Features

Pets Allowed Yes

Interior
Bedrooms 7
Bathrooms 6
Kitchens 3
Recep. Rooms 5
Studies 1
Furnished Yes

Exterior
Garages 1
Carports / Parkings 10
Security Yes
Dom. Accom. 1
Pool Yes
Views True

Sizes
Floor Size 697m²
Land Size 990m²