

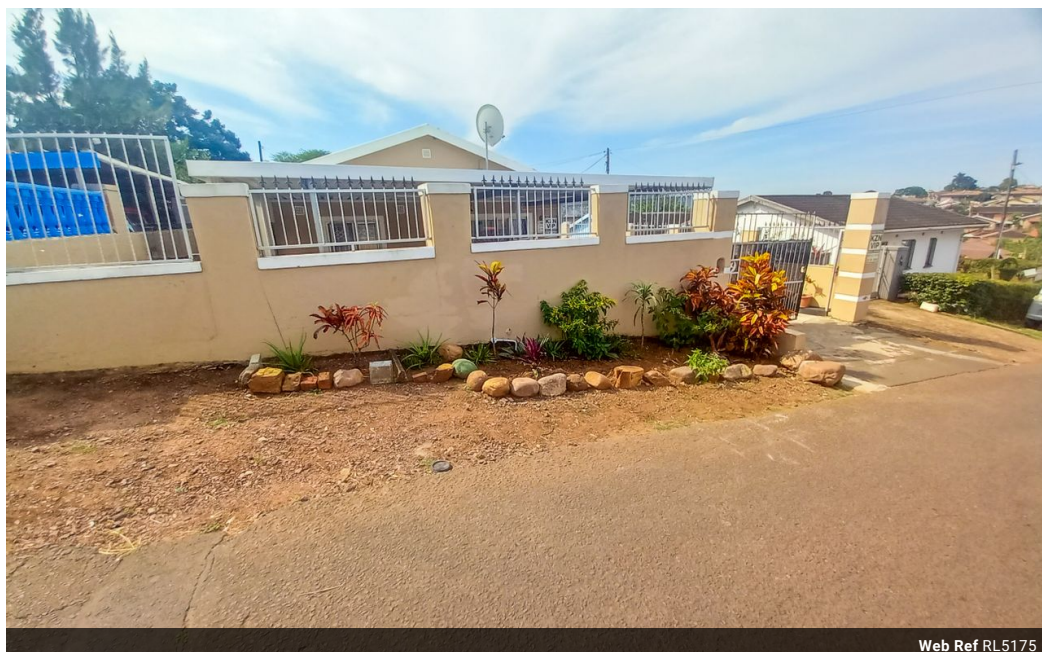


Kemuel Marcus
067 045 0431
kemuel@ingwe.co.za

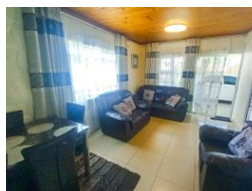
Contact Umhlanga

031 7019898

Ridge 6
20 Ncondo Place
Umhlanga Ridge
Umhlanga



Web Ref RL5175



R980,000

3 1

Monthly Bond Repayment R10,115.45
Calculated over 20 years at 11% with no deposit.

Transfer Costs R30,412.00 **Bond Costs** R23,335.00
These calculations are only a guide. Please ask your conveyancer for exact calculations.

Monthly Rates R495

INDEPENDENCE OFFERED WITH A FREESTANDING HOME

This home is situated in a peaceful area and is perfect for the growing family who may be looking to upsize their current home and who may also want to move away from the semi detached lifestyle ,to having yard space that you can call your own.

- The home contains :
- Three bedrooms with built in cupboards
 - A modern kitchen that is fully fitted
 - Spacious open plan lounge and dining room area
 - Full family bathroom
 - Spacious yard that can park multiple vehicles.

The home is situated close to major amenities such as shopping centres and schools and is a short distance away from major public routes.

Call today for a viewing.

Features

Pets Allowed	Yes			
Interior		Exterior		Sizes
Bedrooms	3	Carports / Parkings	1	Land Size
Bathrooms	1	Security	Yes	240m ²
Kitchens	1	Pool	No	
Recep. Rooms	1	Views	True	
Furnished	No			