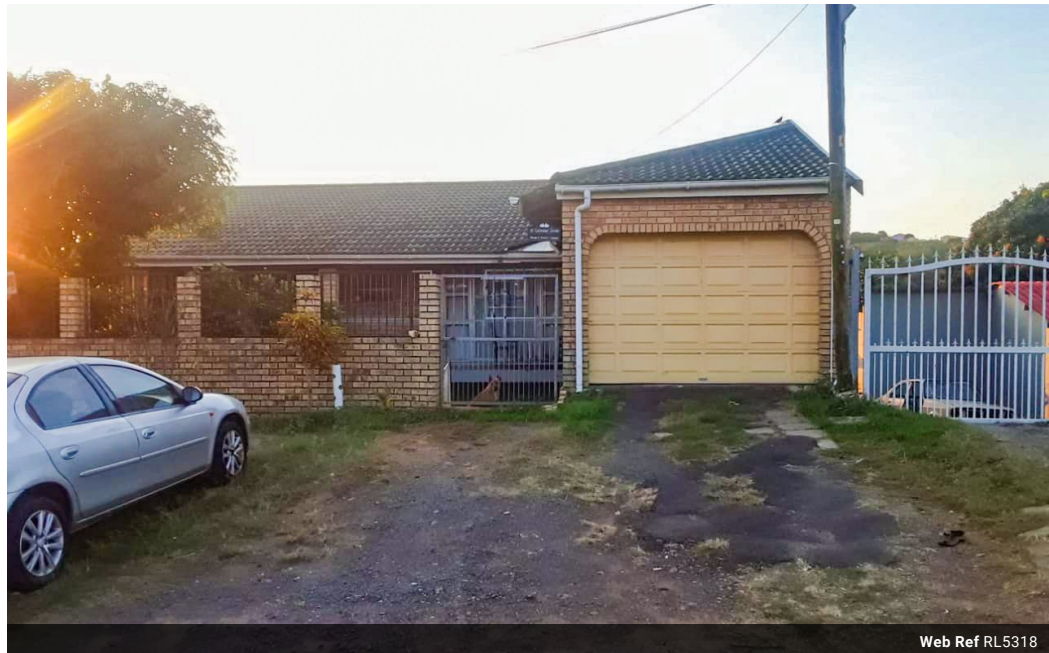




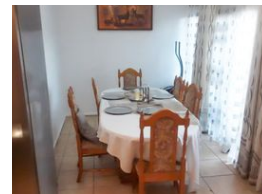
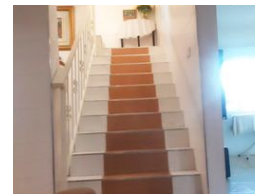
Bradley Pandaram
072 723 4794
bradley@ingwe.co.za

Contact Umhlanga
031 7019898

Ridge 6
20 Ncondo Place
Umhlanga Ridge
Umhlanga



Web Ref RL5318



R1,400,000

🛏 5 🚿 4 🚗 1

Monthly Bond Repayment R14,450.64

Calculated over 20 years at 11% with no deposit.

Transfer Costs R40,617.00 **Bond Costs** R27,105.00

These calculations are only a guide. Please ask your conveyancer for exact calculations.

Monthly Rates R1,182

Income generating Clayfield clinker

This family home is perfectly situated in a much sought after neighborhood of Clayfield.

The inviting ground floor welcomes you to a large tiled lounge ideal to accommodate a big family during family time.

The separate dining room is well suited for a relaxing quiet dinner.

The kitchen boasts built-in cupboards as well as a gas stove and a scullery for the extra space you may need.

The guest bedroom fitted with built-in cupboards is on the ground floor. This room can also be transformed into a laundry room, a study or even an office.

The upper level offers four generously sized bedrooms that are tiled and well kept. Three of these bedrooms are fitted with built-in cupboards while one of the bedrooms has a walk in closet making this space friendly. All four bedrooms upstairs have access to the secure balcony that oversees...

Features

Pets Allowed Yes

Interior

Bedrooms	5
Bathrooms	4
Kitchens	1
Recep. Rooms	2
Furnished	No

Exterior

Garages	1
Carports / Parkings	4
Security	No
Pool	No
Views	True

Sizes

Floor Size	380m ²
Land Size	291m ²