



Kemuel Marcus
067 045 0431
kemuel@ingwe.co.za

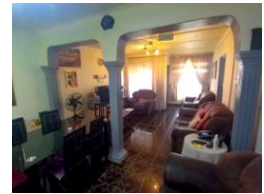
Contact Umhlanga
031 7019898

Ridge 6
20 Ncondo Place
Umhlanga Ridge
Umhlanga



SOLE MANDATE

Web Ref RL5430



R1,199,000

 3  1  3

Monthly Bond Repayment R12,375.94

Calculated over 20 years at 11% with no deposit.

Transfer Costs R32,749.00 **Bond Costs** R25,220.00

These calculations are only a guide. Please ask your conveyancer for exact calculations.

Monthly Rates R795

The home you were looking for .

This ideal home is situated in the heart of Eastbury, on one of the most sought after roads in the entire area. The home is best suited for the growing family due to its expansive nature .

The interior of the home contains :

- Three bedrooms
- Full family bathroom
- Spacious lounge
- Spacious dining area
- Fully fitted kitchen

The exterior of the home contains :

- Balcony area which is perfect for entertaining guests
- Private garden
- Three fully secure garages

The home is situated close to major public amenities and great public schools such as Earlington Secondary School, and is also close to major public transport routes.

Features

Pets Allowed Yes

Interior

Bedrooms	3
Bathrooms	1
Kitchens	1
Recep. Rooms	2
Furnished	No

Exterior

Garages	3
Carports / Parkings	3
Security	Yes
Pool	No
Views	True

Sizes

Land Size	294m ²
-----------	-------------------