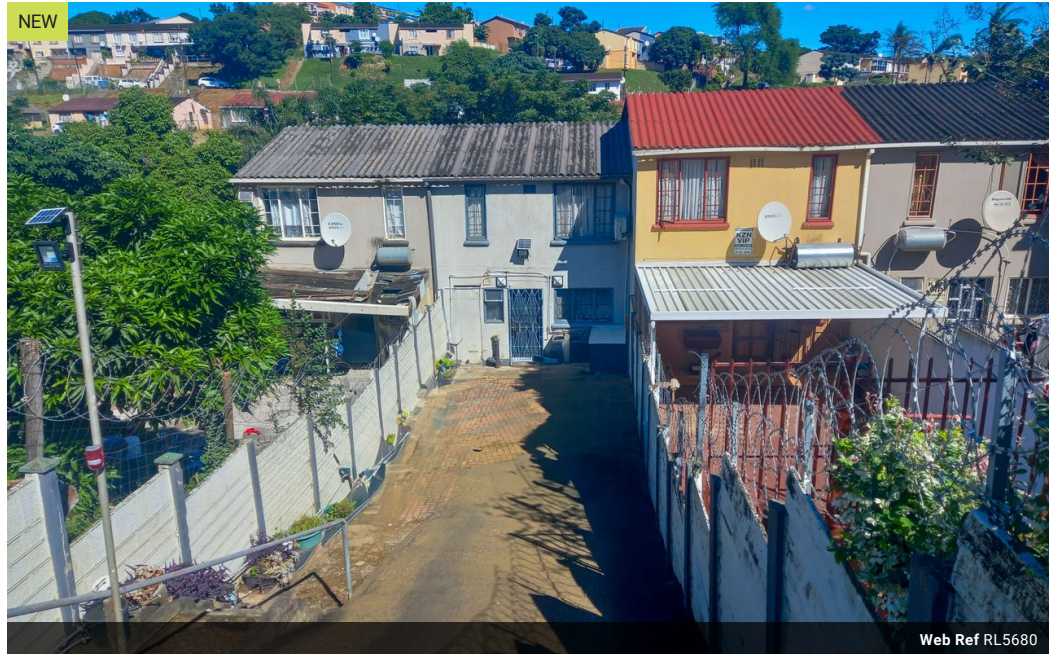




Kemuel Marcus
067 045 0431
kemuel@ingwe.co.za

Contact Umhlanga
031 7019898

Ridge 6
20 Ncondo Place
Umhlanga Ridge
Umhlanga



Web Ref RL5680



R666,000

2  1 

Monthly Bond Repayment R6,874.37

Calculated over 20 years at 11% with no deposit.

Transfer Costs R23,730.00 **Bond Costs** R17,680.00

These calculations are only a guide. Please ask your conveyancer for exact calculations.

Monthly Rates R542

Main road opportunity

This versatile two bedroom home offers the perfect blend of comfort and opportunity. Featuring a full family bathroom, a fully fitted kitchen, and ample storage throughout, it's designed for convenient living. Three air conditioners ensure year-round comfort, while the layout suits both a private residence and a thriving home-based business.

Located on a main road with excellent visibility and access, this home presents a prime opportunity for entrepreneurs or anyone seeking a central, well-connected spot. Whether you're looking to settle in or invest in a strategic business location, this property delivers.

Don't miss out—schedule a viewing today!

Features

Pets Allowed Yes

Interior
Bedrooms 2
Bathrooms 1
Kitchens 1
Recep. Rooms 1
Furnished No

Exterior
Carports / Parkings 3
Security Yes
Pool No
Views True

Sizes
Land Size 147m²

