



Valerie Naidoo
084 507 3082
valerie@ingwe.co.za

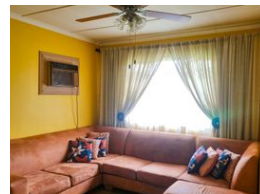
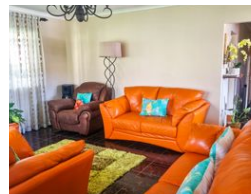
Contact Umhlanga
031 7019898

Ridge 6
20 Ncondo Place
Umhlanga Ridge
Umhlanga

NEW



Web Ref RL5672



R1,995,000

🛏 4 🚿 2 🚗 1

Monthly Bond Repayment R20,592.16

Calculated over 20 years at 11% with no deposit.

Transfer Costs R74,906.00 **Bond Costs** R32,760.00

These calculations are only a guide. Please ask your conveyancer for exact calculations.

Monthly Rates R1,200

Where happiness and warmth fills every corner.

Welcome to this delightful family home, where happiness and warmth fills every corner and this home has now become the end of the chapter for this family to move on and make new memories, giving you and your family the opportunity to now make precious memories in this amazing home and enjoy every details the house has to offer.

Designed for laughter and togetherness, all on a level piece of land of 360sqm, located in the heart of Southgate in Phoenix - This freestanding 4 Bedroom 2 Bath, 4 Toilets, Lounge Kitchen and dining room with a single garage has amazing volume to offer.

Upon entry of this property, it has automated gates that leads into a tarred courtyard with a manicured garden a single garage that has enough space for parking and storage.

There are 4 Airconditioning systems situated in the house. A patio at the...

Features

Pets Allowed		Yes			
Interior				Exterior	
Bedrooms	4			Garages	1
Bathrooms	2			Carports / Parkings	1
Kitchens	1			Security	Yes
Recep. Rooms	2			Dom. Accom.	1
Studies	1			Pool	No
Furnished	No			Views	True
				Sizes	
				Land Size	360m²

