

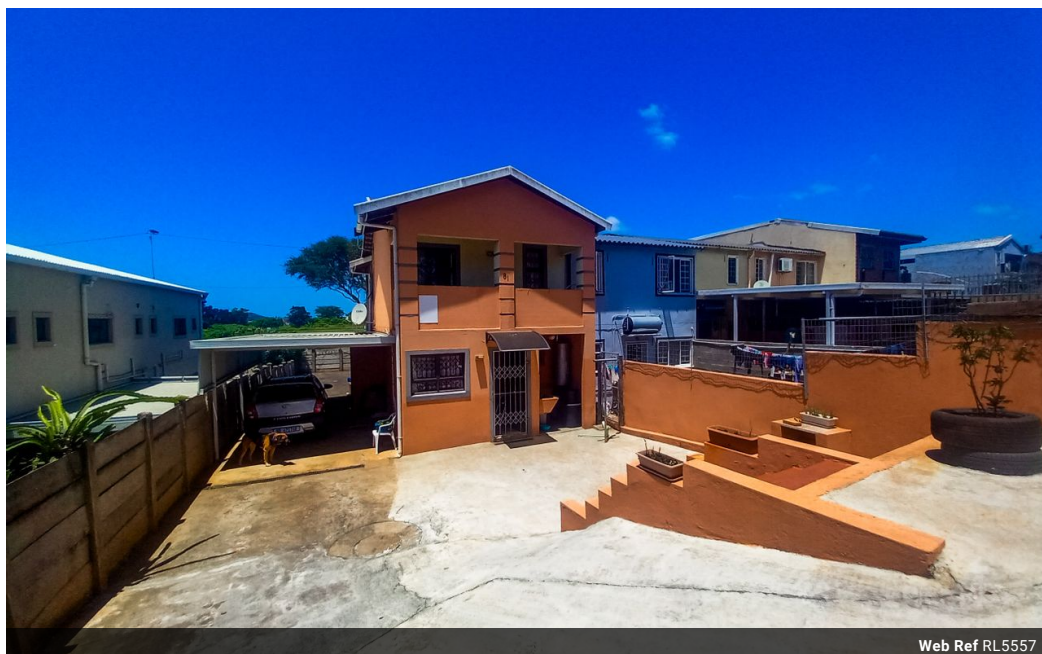


**Kemuel Marcus**  
067 045 0431  
kemuel@ingwe.co.za

Contact Umhlanga

031 7019898

Ridge 6  
20 Ncondo Place  
Umhlanga Ridge  
Umhlanga



Web Ref RL5557



**R960,000**

2   2

**Monthly Bond Repayment** R9,909.01  
Calculated over 20 years at 11% with no deposit.

**Transfer Costs** R30,412.00   **Bond Costs** R23,335.00  
These calculations are only a guide. Please ask your conveyancer for exact calculations.

**Monthly Rates** R891

### Stunning Family Home !

This well-positioned corner property offers both space and convenience, featuring extensions at both the front and rear for added living space.

The home runs parallel to the Phoenix Highway, ensuring easy access to major routes while maintaining a peaceful residential feel. Inside, the home boasts a spacious open-plan lounge and dining area, ideal for family gatherings or entertaining guests.

The large windows fill the space with natural light, creating a welcoming atmosphere. The fully fitted kitchen seamlessly integrates with the living spaces, offering a functional layout for everyday use.

The main bedroom is complete with an en-suite bathroom and a generous walk-in closet, offering comfort and privacy. Two additional well-sized rooms provide ample space for children and guests.

The full family bathroom is tastefully...

### Features

<b>Pets Allowed</b>	Yes			
<b>Interior</b>		<b>Exterior</b>		<b>Sizes</b>
Bedrooms	2	Carports / Parkings	6	Land Size
Bathrooms	2	Security	No	257m <sup>2</sup>
Kitchens	1	Pool	No	
Recep. Rooms	1	Views	True	
Furnished	No			