



Kemuel Marcus
067 045 0431
kemuel@ingwe.co.za

Contact Umhlanga

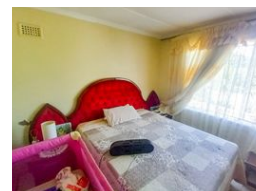
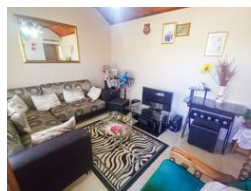
031 7019898

Ridge 6
20 Ncondo Place
Umhlanga Ridge
Umhlanga

FEATURED



Web Ref RL5180



R900,000

🛏️ 2 🚿 1 🚗 2

Monthly Bond Repayment R9,289.70
Calculated over 20 years at 11% with no deposit.

Transfer Costs R28,244.00 **Bond Costs** R21,450.00
These calculations are only a guide. Please ask your conveyancer for exact calculations.

Monthly Rates R600

INCOME GENERATING INVESTMENT

This home that is situated in the heart of Westham is perfect for the family that want to subsidise their bond repayment by utilizing the outbuilding to generate an income.
The home contains:

- Two bedrooms
- Spacious lounge and dining
- Kitchen fitted with built in cupboards.
- Outbuilding
- Double Garage
- Spacious Yard

The home is situated close to shopping centres , schools and is also close to public transport routes.
Call today for a viewing.

Features

Pets Allowed	Yes			
Interior		Exterior		Sizes
Bedrooms	2	Garages	2	Land Size
Bathrooms	1	Security	Yes	315m ²
Kitchens	1	Pool	No	
Recep. Rooms	1	Views	True	
Furnished	No			