

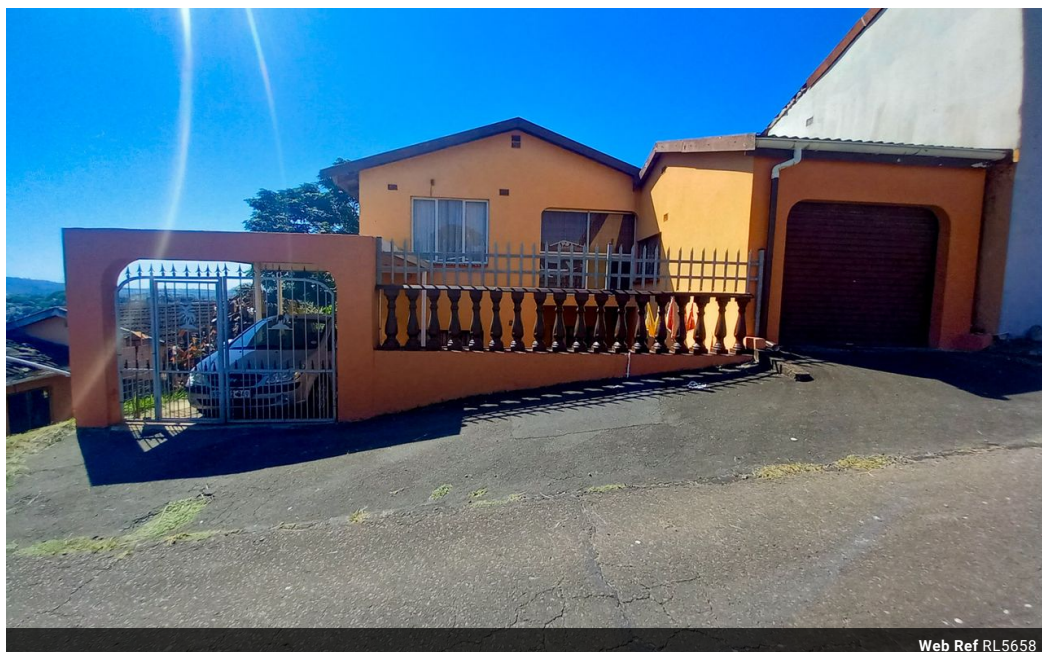


**Kemuel Marcus**  
067 045 0431  
kemuel@ingwe.co.za

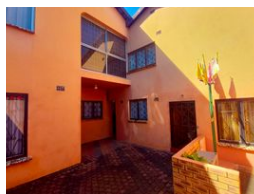
Contact Umhlanga

031 7019898

Ridge 6  
20 Ncondo Place  
Umhlanga Ridge  
Umhlanga



Web Ref RL5658



**R1,495,000**

🛏 5   🚿 4   🚗 1

**Monthly Bond Repayment** R15,431.22  
Calculated over 20 years at 11% with no deposit.

**Transfer Costs** R45,635.00   **Bond Costs** R28,990.00  
These calculations are only a guide. Please ask your conveyancer for exact calculations.

**Monthly Rates** R1,095

### Massive family home with endless potential

This impressive 5-bedroom, 4-bathroom home offers the ultimate in flexibility, featuring two self-contained living spaces in one. Perfectly suited for multi-generational families or those seeking dual living arrangements, this property combines comfort and convenience with ample space for everyone.

The home is split across two levels, with spacious bedrooms located both upstairs and downstairs. The upstairs features a large master bedroom with a private ensuite, along with additional well-sized bedrooms and bathrooms. The lower level also boasts its own bedrooms and bathrooms, offering privacy and convenience for family members or guests.

Designed for modern living, the home includes two well-appointed kitchens, allowing for easy meal preparation for large families or separate living areas. Two spacious lounges provide the...

### Features

Pets Allowed		Exterior		Sizes	
	Yes	Garages	1	Land Size	240m <sup>2</sup>
<b>Interior</b>		Carports / Parkings	1		
Bedrooms	5	Security	Yes		
Bathrooms	4	Dom. Accom.	1		
Kitchens	2	Pool	No		
Recep. Rooms	2	Views	True		
Furnished	No				

