



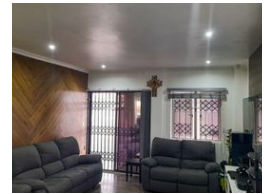
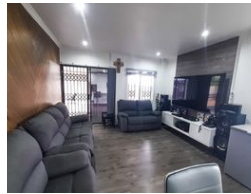
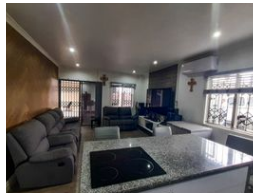
**Bradley Pandaram**  
072 723 4794  
bradley@ingwe.co.za

Contact Umhlanga  
031 7019898

Ridge 6  
20 Ncondo Place  
Umhlanga Ridge  
Umhlanga



Web Ref RL5423



**R1,095,000**

 3  1

**Monthly Bond Repayment** R11,302.46  
Calculated over 20 years at 11% with no deposit.

**Transfer Costs** R32,749.00 **Bond Costs** R25,220.00

These calculations are only a guide. Please ask your conveyancer for exact calculations.

**Monthly Rates** R750

### One Level With All Sparkle and Modern Lifestyle!

This luxurious freestanding home showcases the above-average quality and standard you and your family deserve. It has been meticulously finished so its new owner can conveniently move straight in.

It is boastfully located on a level stand in Whetstone, Phoenix. Conveniently located close to Whetstone Clinic, Library, and a short walk to high schools and primary schools. Centrally located close to Phoenix Plaza, easy access to Bridge City and King Shaka Airport.

Privately positioned on a 472sqm tarred-level stand that is fully secured within precast fencing and automated gates. Fully renovated with trendy laminated flooring for that plush inviting feel. The living areas are open plan and the large open flow makes it ideal to entertain and connect with the family. High gloss push-to-open cupboards and granite counter tops molded...

### Features

**Pets Allowed** Yes

**Interior**  
Bedrooms 3  
Bathrooms 1  
Kitchens 1  
Recep. Rooms 2  
Furnished No

**Exterior**  
Carports / Parkings 10  
Security Yes  
Pool No  
Views True

**Sizes**  
Floor Size 90m<sup>2</sup>  
Land Size 472m<sup>2</sup>