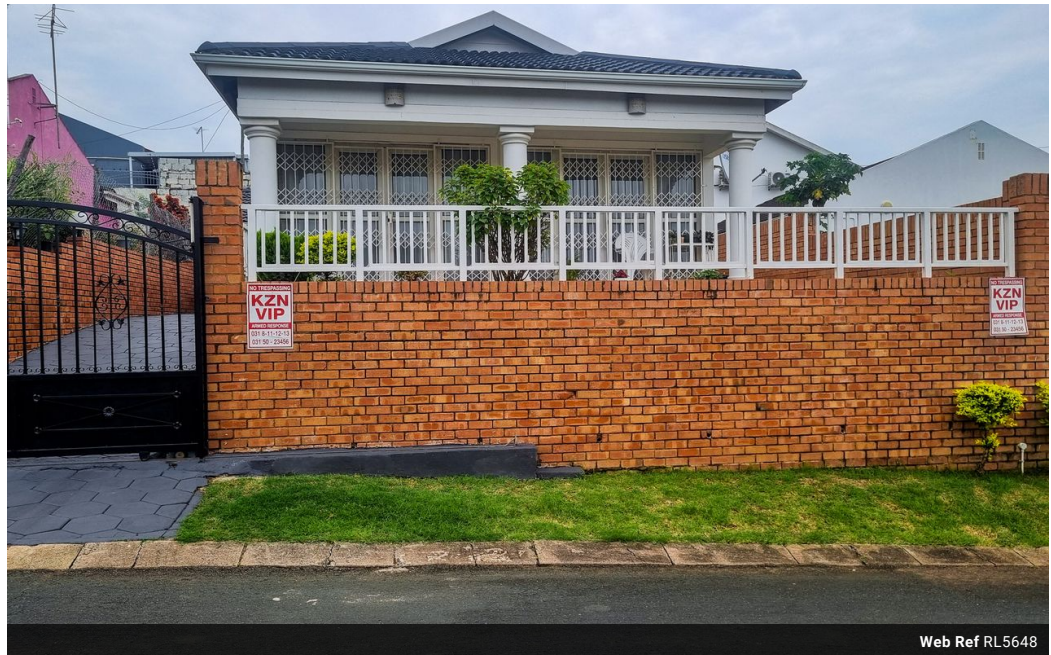




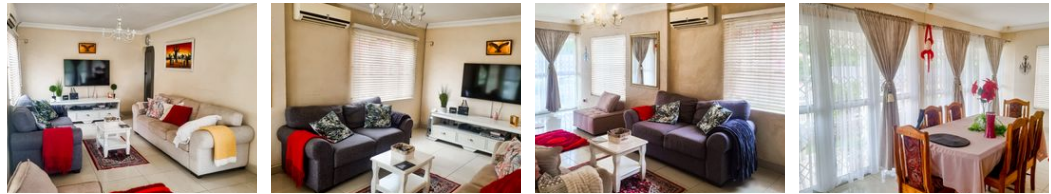
Valerie Naidoo
084 507 3082
valerie@ingwe.co.za

Contact Umhlanga
031 7019898

Ridge 6
20 Ncondo Place
Umhlanga Ridge
Umhlanga



Web Ref RL5648



R1,699,000

 3  2  1

Monthly Bond Repayment R17,536.88
Calculated over 20 years at 11% with no deposit.

Transfer Costs R54,979.00 **Bond Costs** R30,875.00

These calculations are only a guide. Please ask your conveyancer for exact calculations.

Monthly Rates R1,250

Ideal Family Home for new beginners!

Ready to move in and enjoy the comfort this home offers! Beautifully presented, spacious and well maintained, free standing family Home consisting of 3 bedrooms, 2 bathrooms and a single garage in a quite Suburb of Woodview.

Boasting a land size of 290sqm, above road level, there is a well kept garden with a porch, paved yard with ample parking for 4 cars. It is fully renovated with two extensions on the property. The lounge and TV room with separate dining room for seating approximately 8-10 guests with aluminum windows and a sliding door that walks out into the Patio area.

The kitchen which is fully fitted with a modern design of cupboards, Granite tops, stove and oven and serves as the heart of the home, where delicious meals can be prepared. A Separate door from kitchen leads to the side of the house - ideal for pets...

Features

Pets Allowed		Interior		Exterior		Sizes	
	Yes	Bedrooms	3	Garages	1	Land Size	290m ²
		Bathrooms	2	Carports / Parkings	1		
		Kitchens	1	Security	Yes		
		Recep. Rooms	2	Pool	No		
		Studies	1	Views	True		
		Furnished	No				