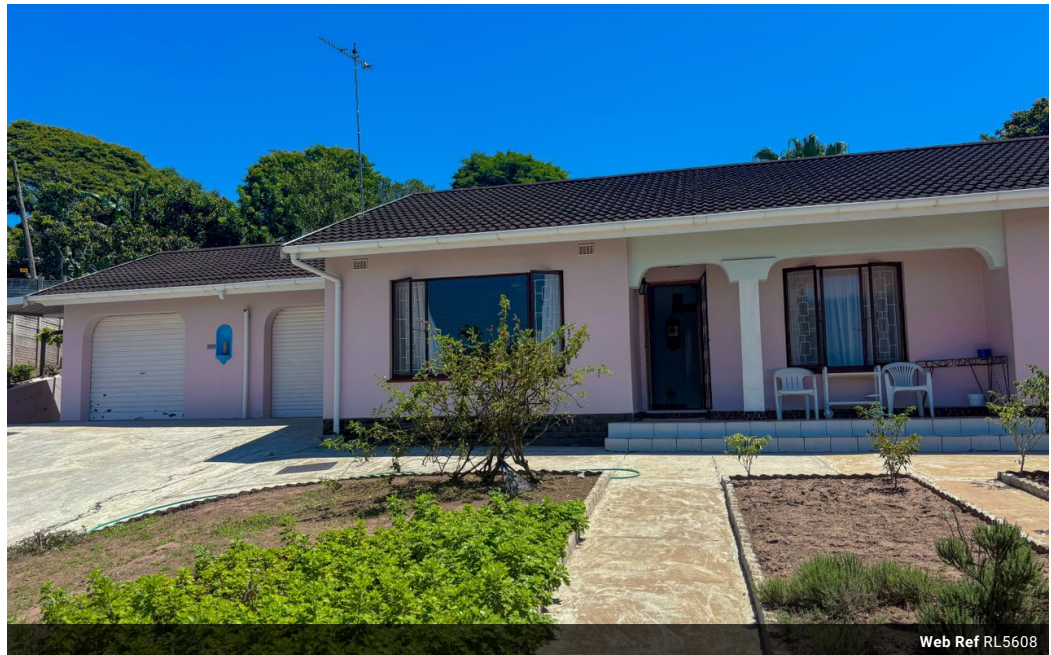




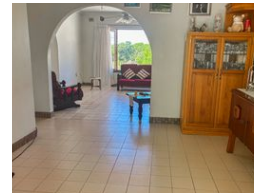
**Stanley Jili**  
083 615 0450  
stanley@ingwe.co.za

Contact Head Office  
**031 701 9898**

34 Glenugie Road  
Pinetown  
3610



Web Ref RL5608



**R1,350,000**

 3  2  2

**Monthly Bond Repayment** R13,934.54  
Calculated over 20 years at 11% with no deposit.

**Transfer Costs** R39,117.00 **Bond Costs** R27,105.00

These calculations are only a guide. Please ask your conveyancer for exact calculations.

**Monthly Rates** R1,165

### A Home in Perfect Condition

Step into comfort and convenience with this inviting 3-bedroom family home.

As you enter, you're greeted by a spacious lounge, dining room is positioned opposite the lounge.

The kitchen is fitted with cupboards.

Each of the Three bedrooms is fitted with built-in cupboards, ensuring plenty of space to keep everything organized. The main bedroom boasts an ensuite and there is an extra bathroom that's comes with bathtub and shower for other family members.

This property comes with a double garage, a carport, an outside toilet and a JoJo tank

The property is in close proximity to Pick n Pay shopping centre and medical centre.

Don't miss out on this wonderful opportunity to own your dream home.

For viewing appointment contact Stanley Jili

### Features

**Pets Allowed** Yes

#### Interior

Bedrooms	3
Bathrooms	2
Kitchens	1
Recep. Rooms	2
Furnished	No

#### Exterior

Garages	2
Carports / Parkings	2
Security	Yes
Pool	No
Views	True

#### Sizes

Land Size	958m <sup>2</sup>
-----------	-------------------