



Siva Naidoo
0828511210
siva@ingwe.co.za

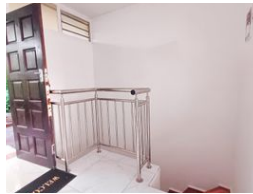


Bonga Phillimon Mngadi
079 451 9733
bonga@ingwe.co.za

Contact Head Office

031 701 9898

34 Glenugie Road
Pinetown
3610



R790,000

 2  1

Monthly Bond Repayment R8,154.29
Calculated over 20 years at 11% with no deposit.

Transfer Costs R25,898.00 **Bond Costs** R19,565.00
These calculations are only a guide. Please ask your conveyancer for exact calculations.

Monthly Rates R784 **Sectional Title Levy** R900

Your Oasis Awaits: Recently Renovated 2-Bed Duplex in Paradise Valley

Welcome to your newly renovated sanctuary in the sought-after Paradise Valley complex. This exquisite 2-bedroom duplex offers a seamless blend of style and functionality, perfect for modern living.

Step inside to discover a semi-open floor plan that maximizes space and natural light. The gorgeous kitchen steals the spotlight with its unique serving counter broken into the wall, creating a focal point that's both practical and visually stunning. With its sleek design and high-end finishes, cooking and entertaining become a joyous affair.

The lounge and dining room are bathed in sunlight, creating a warm and inviting atmosphere for gatherings or quiet moments of relaxation. Picture-perfect views enhance the charm of the space, making every day feel like a retreat.

Both bedrooms are generously sized, providing ample room for...

Features

Interior		Exterior		Sizes	
Bedrooms	2	Carports / Parkings	1	Floor Size	83m ²
Bathrooms	1	Security	Yes		
Kitchens	1	Pool	Yes		
Recep. Rooms	2	Views	True		
Furnished	No				