



**Bonga Phillimon Mngadi**  
079 451 9733  
bonga@ingwe.co.za

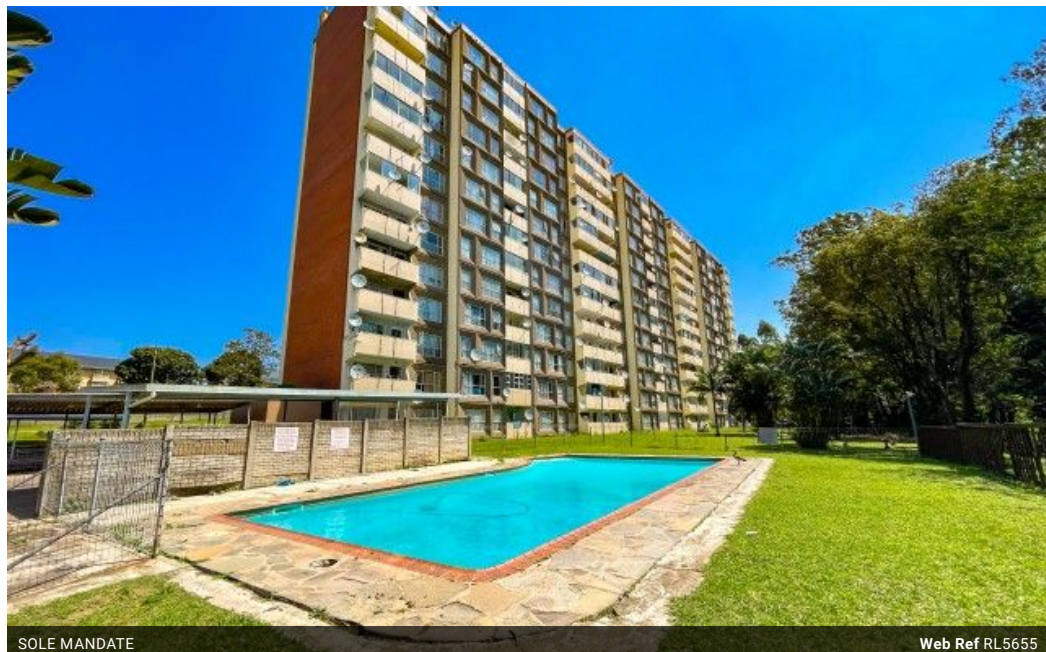


**Siva Naidoo**  
0828511210  
siva@ingwe.co.za

Contact Head Office

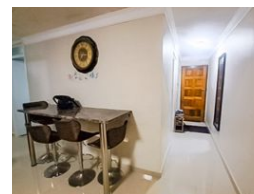
031 701 9898

34 Glenugie Road  
Pinetown  
3610



SOLE MANDATE

Web Ref RL5655



**R700,000**

2 1

**Monthly Bond Repayment** R7,225.32  
Calculated over 20 years at 11% with no deposit.

**Transfer Costs** R23,730.00    **Bond Costs** R17,680.00

These calculations are only a guide. Please ask your conveyancer for exact calculations.

**Monthly Levy** R1,700    **Monthly Rates** R450

### Investment Opportunity in Pinetown

**Key Features:**

- 2 spacious bedrooms with built-in cupboards (BICs)
  - Open-plan lounge and dining room
  - Fully fitted kitchen
  - Separate toilet and bathroom
  - Enclosed balcony
  - Undercover parking
  - Communal pool
- Prime Location:**
- Elangeni College on your doorstep
  - Convenient access to all amenities and transport links

**Security Features:**

- Fully secured with CCTV cameras
- 24-hour security

**Investment Benefits:**

- Potential for rental income

### Features

**Interior**

Bedrooms	2
Bathrooms	1
Kitchens	1
Recep. Rooms	2
Furnished	No

**Exterior**

Carports / Parkings	1
Security	Yes
Pool	Yes
Views	True

**Sizes**

Floor Size	78m <sup>2</sup>
Land Size	13,555m <sup>2</sup>

