



Siva Naidoo
0828511210
siva@ingwe.co.za



Bonga Phillimon Mngadi
079 451 9733
bonga@ingwe.co.za

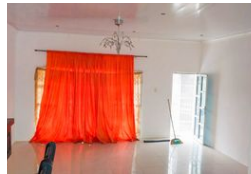
Contact Head Office

031 701 9898

34 Glenugie Road
Pinetown
3610



Web Ref RL5654



R1,695,000

 3  2  2

Monthly Bond Repayment R17,495.59

Calculated over 20 years at 11% with no deposit.

Transfer Costs R54,739.00 **Bond Costs** R30,875.00

These calculations are only a guide. Please ask your conveyancer for exact calculations.

Monthly Rates R1,750

Luxurious 3-Bedroom Home with Income-Generating Flatlet

Stunning Features:

- 3 spacious bedrooms, all with built-in cupboards (BICs) and laminate flooring
- Main bedroom boasts an elegant dressing room and en-suite bathroom
- Open-plan lounge and dining room with a private bar area
- Modern, fully fitted kitchen with ample space for cooking and entertainment
- Family bathroom with shower
- Double garage remote-controlled
- 1-bedroom flatlet with separate entrance, perfect for generating extra income
- Tared driveway and remote-controlled gate for secure access

Additional Benefits:

- Private and secure living
- Ample parking space
- Potential for rental income from the flatlet
- Convenient location, close to amenities and transport links

Viewing:

Contact us to schedule a viewing and make this incredible property yours!

Features

Pets Allowed		Exterior		Sizes	
	Yes	Garages	2	Land Size	827m ²
Interior		Security	Yes		
Bedrooms	3	Pool	No		
Bathrooms	2	Views	False		
Kitchens	1				
Recep. Rooms	2				
Furnished	No				

