



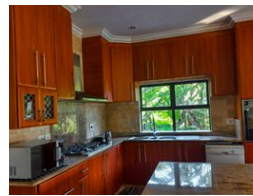
Samantha Reddy
0836619350
samantha@ingwe.co.za

Contact Umhlanga
031 7019898

Ridge 6
20 Ncondo Place
Umhlanga Ridge
Umhlanga



Web Ref RL5531



R4,750,000

 3  5  3

Monthly Bond Repayment R49,028.95
Calculated over 20 years at 11% with no deposit.

Transfer Costs R372,677.00 **Bond Costs** R59,150.00
These calculations are only a guide. Please ask your conveyancer for exact calculations.

Monthly Levy R2,375.7 **Monthly Rates** R4,093.6 **Special Levy** R395

Magnificent ocean view overlooking lush greenery

With Magnificent beach views overlooking the lush greenery, this stunning home is built on 3 levels. The entrance level has a huge tile and covered patio, which welcomes you into a spacious open plan fully fitted kitchen with ample granite counter tops, hob extractor and island stove, the dining room and airy big lounge with a sea view balcony. It also has a lovely guest bathroom.

A walk upstairs leads you to small lounge and the huge first bedroom with sea views, aluminium glass doors and windows which leads to the balcony and fully fitted, bedroom two is airy and spacious, fitted and with ensuite and also a balcony with sea view, the third bedroom is also very spacious fully fitted and with big ensuite, an additional bathroom.

The stairs leading to the lowest garage level has a small gate to provide security for little...

Features

Pets Allowed		Yes				Sizes	
Interior		Exterior		Garages	3	Land Size	966m ²
Bedrooms	3	Security	Yes	Pool	No		
Bathrooms	5	Views	True				
Kitchens	1						
Recep. Rooms	2						
Furnished	No						

