



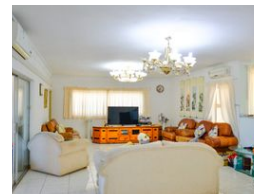
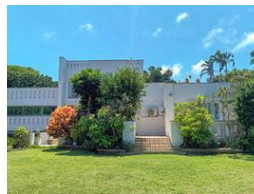
Sugan Naidu
071 167 4113
sugan@ingwe.co.za

Contact Umhlanga
031 7019898

Ridge 6
20 Ncondo Place
Umhlanga Ridge
Umhlanga



Web Ref RL5625



R4,699,000

5 Bedrooms, 4 Bathrooms, 2 Garages

Monthly Bond Repayment R48,502.53

Calculated over 20 years at 11% with no deposit.

Transfer Costs R367,067.00 **Bond Costs** R59,150.00

These calculations are only a guide. Please ask your conveyancer for exact calculations.

Monthly Rates R5,880

Stunning sea views

This opulent 5-bedroom residence in the center of La Lucia showcases stunning sea views from all rooms, merging sophistication, spaciousness, and comfort. Crafted for families and entertainers alike, it features large open-plan living areas that transition effortlessly onto a glass-enclosed balcony, ideal for savoring panoramic ocean views.

The property includes a designated study, a vibrant garden perfect for children and pets, and a sizable swimming pool with a paved braai area for entertaining guests. Three of the five generous bedrooms feature en-suite bathrooms, providing privacy and ease. A double garage offers direct entry into the residence, with plenty of off-street parking available. Additional features comprise staff quarters with a private bathroom, a separate laundry area, and two reinforced private balconies...

Features

Pets Allowed Yes

Interior

Bedrooms 5
Bathrooms 4
Kitchens 1
Recep. Rooms 2
Furnished No

Exterior

Garages 2
Security No
Dom. Accom. 1
Pool Yes
Views True

Sizes

Floor Size 215m²
Land Size 1,519m²

