

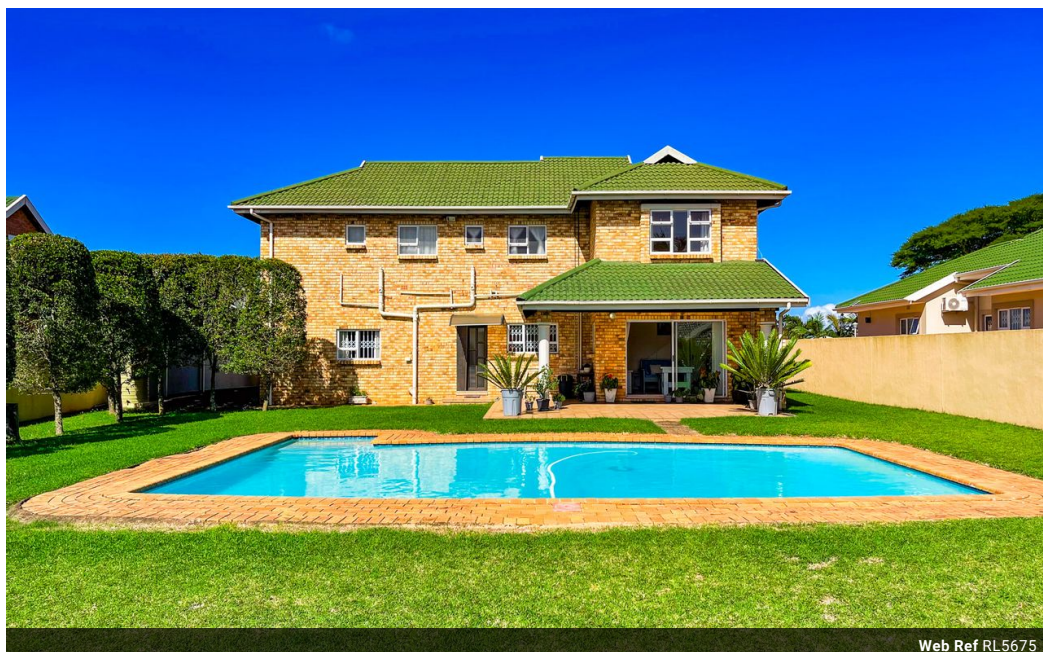


Samantha Reddy
0836619350
samantha@ingwe.co.za

Contact Umhlanga

031 7019898

Ridge 6
20 Ncondo Place
Umhlanga Ridge
Umhlanga



Web Ref RL5675



R3,850,000

Monthly Bond Repayment R39,739.25
Calculated over 20 years at 11% with no deposit.

Transfer Costs R264,550.00 **Bond Costs** R51,610.00
These calculations are only a guide. Please ask your conveyancer for exact calculations.

Monthly Rates R2,040.9

🛏️ 3 🚿 2 🚗 2

Amazing home in Somerset Park with pool

Beautiful home in Somerset Park with a big sparkling pool, this double storey house is built with light face brick for a clean fresh look. Located nearby to the churches, mosque, and temple, and central to Gateway shopping Centre and Ilala Ridge and La Lucia mall for your convenience.

It boasts 4 rooms upstairs, 3 bedrooms with BIC and 1 without that could be used as an office/ study add cupboards and make it into the 4th bedroom or an upstairs lounge or T.V room. The master bedroom has an ensuite with a walk in closet and ample BIC space. The 2nd bathroom has both shower and bathtub and a separate toilet. The other 2 bedrooms comes fitted with BIC and 1 comes with a desk, all the rooms have bay windows.

The house is surrounded with walls and has an electronic gate enters a remote controlled double garage which leads into...

Features

Interior		Exterior		Sizes	
Bedrooms	3	Garages	2	Floor Size	227m ²
Bathrooms	2	Carports / Parkings	2	Land Size	748m ²
Kitchens	1	Security	No		
Recep. Rooms	3	Pool	No		
Studies	1	Views	False		
Furnished	No				

