



Kemuel Marcus
067 045 0431
kemuel@ingwe.co.za

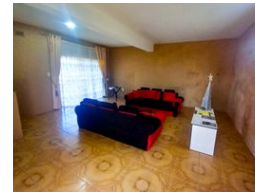
Contact Umhlanga
031 7019898

Ridge 6
20 Ncondo Place
Umhlanga Ridge
Umhlanga



SOLE MANDATE

Web Ref RL5275



R795,000

 3  3  2

Monthly Bond Repayment R8,205.90

Calculated over 20 years at 11% with no deposit.

Transfer Costs R25,898.00 **Bond Costs** R19,565.00

These calculations are only a guide. Please ask your conveyancer for exact calculations.

Monthly Rates R698

Large family home

This ideal family home is situated in the heart of Verulam and it contains all the space you could need.

The home boasts a double garage which can park up to four vehicles. The garage could also be converted into an outbuilding with minimal effort.

The extended lounge area is perfect for those family gatherings or your very own private relaxation room. This lounging area could be converted into a gaming room or anything you could imagine due to the space on offer.

The home itself contains :

Three spacious rooms with built in cupboards

Two Family Bathrooms

Fully fitted kitchen and a Dining room area

A spacious yard with spectacular views

Call today for a viewing , bond assistance also on offer.

Features

Pets Allowed Yes

Interior

Bedrooms	3
Bathrooms	3
Kitchens	1
Recep. Rooms	2
Furnished	No

Exterior

Garages	2
Carports / Parkings	4
Security	No
Pool	No
Views	True

Sizes

Land Size	450m ²
-----------	-------------------

