



Gloria Naidoo
0844466063
gloria@ingwe.co.za

Contact Umhlanga

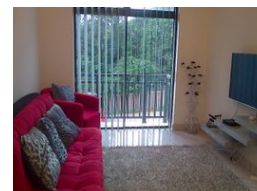
031 7019898

Ridge 6
20 Ncondo Place
Umhlanga Ridge
Umhlanga



SOLE MANDATE

Web Ref RL5671



R8,000 pm

Lease Period 12 months
Annual Escalation -

Availability 01 May 2025

Deposit -



1 Bedroom Apartment To Let in New Town Centre

Top floor !!! Amazing views over Umhlanga !!!

An immaculate one bed apartment at Manhattan Mews (bigger unit with a separate kitchen wing)

Bright and breezy, open plan bright and airy unit leads onto a balcony with lovely inland views.

Pool and laundry in the complex.

Secure allocated parking.

Rental excludes utilities (pre-paid electricity) water R250 p/m

Balcony with lovely inland views

Built-in Wardrobes

Safe and secure complex, excellent 24-hour manned security.

Features

Interior

Bedrooms	1
Bathrooms	1
Kitchens	1
Recep. Rooms	1
Furnished	No

Exterior

Garages	1
Security	Yes
Pool	Yes
Views	True

Sizes

Floor Size	45m ²
------------	------------------