

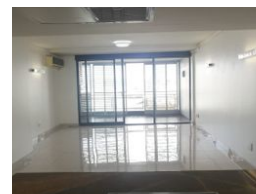


**Gloria Naidoo**  
0844466063  
gloria@ingwe.co.za

Contact Umhlanga

031 7019898

Ridge 6  
20 Ncondo Place  
Umhlanga Ridge  
Umhlanga



**R12,500 pm**

**Lease Period** 12 months  
**Annual Escalation** -

**Availability** 01 May 2025

**Deposit** -

 2  2  2

## PALM BOULEVARD - 2 BED 2 BATH 2PKG

Location!! Location!!

Sought after Palm Boulevard - overlooking Gateway Mall.

Prime location in Umhlanga - ideal lock up and go apartment.

Spacious open plan apartment close to the beach and Umhlanga promenade.

Immaculate 2 bedrooms, 2 bathrooms, open plan kitchen and large living area, flows onto a large enclosed private balcony.

Two basement parking bays.

3 X air conditioners

Small pool and sauna in the complex

Excellent 24-hour manned security with access control and CCTV cameras

## Features

### Interior

Bedrooms	2
Bathrooms	2
Kitchens	1
Recep. Rooms	2
Furnished	No

### Exterior

Garages	2
Security	Yes
Pool	Yes
Views	True

### Sizes

Floor Size	120m²
------------	-------